



Table of Contents

<u>Water Options</u>	-	<u>Page 3</u>
<u>Body Options</u>	-	<u>Page 20</u>
<u>Door Options</u>	-	<u>Page 29</u>
<u>Boom Options</u>	-	<u>Page 40</u>
<u>Lighting Options</u>	-	<u>Page 49</u>
<u>Miscellaneous Options</u>	-	<u>Page 69</u>

Water Options

- High Pressure Hose Reel	-	Page 4
- Hydro Excavation Package	-	Page 5
- Body Washout	-	Page 6
- Air Purge	-	Page 7
- PTO Driven Cold Weather Recirculator	-	Page 8
- Digital Water Level Indicator	-	Page 9
- Tanks Joined	-	Page 10
- Rodder Pump Drain Valves	-	Page 11
- Continuous Watertank Fill	-	Page 12
- Rodder Hose Pinch Roller	-	Page 13



High Pressure Hose Reel

Options 6014C / 6014CA

What it does:

Allows for the use of high pressure water accessories remotely from the truck.

How it works:

Includes a high pressure auxiliary hose reel with 50' of hose installed. Hose includes stainless steel quick connect couplings to attach to the high pressure handgun or hydro excavation trigger.

6014C - High Pressure Hose Reel

6014CA - 2 High Pressure Hose Reels



Hydro Excavation Package

Option 5021C

What it does:

It is a kit that includes the necessary items to safely and productively hydro excavate with your Vactor 2100i.

How it works:

Includes the necessary digging lances, nozzle, trigger, and vacuum tube to utilize the high pressure water produced by the truck to cut soil and remove it with the vacuum.





Body Washout Option 1003C

What it does:

Utilizes the water flow to help wash material out of the body to minimize the amount of manual cleaning required.

How it works:

It utilizes a fan pattern nozzle to direct the water flow to the bottom and sides of the debris body to help evacuate debris. This reduces the amount of material that the operator needs to remove using the high pressure handgun.





Air Purge

Option 2006C

What it does:

Pushes water out of the system using air.

How it works:

Using the on board air compressor of the truck that generates pressurized air to be used to push the water out of the water system to prevent line blockages from frozen water.





PTO Driven Cold Weather Recirculator

Option 5008C

What it does:

Recirculates the water through the system and back into the watertanks.

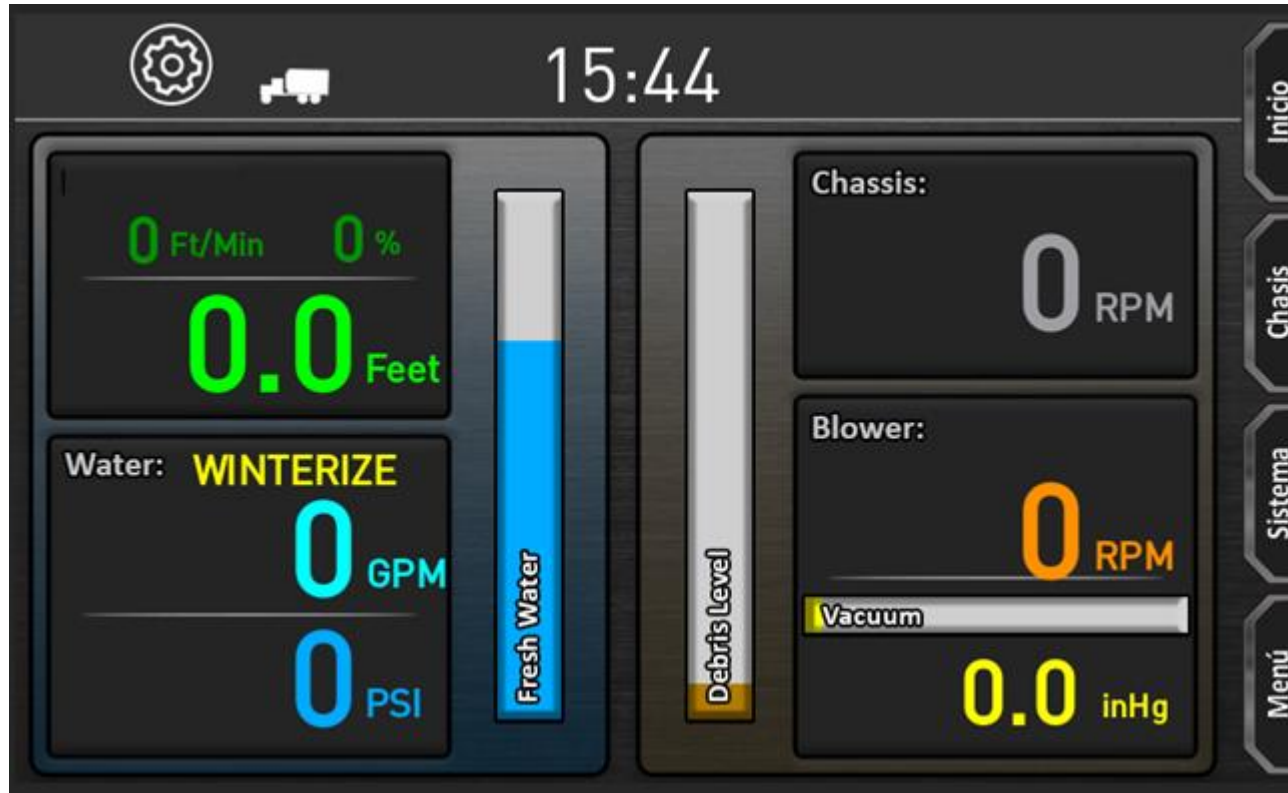
How it works:

Using the PTO driven hydraulic pumps to drive the Rodder Pump, the water is circulated through all of the desired water circuits.



Digital Water Level Indicator

Option 3019C



What it does:

Displays water level on the hose reel IntuiTouch Screen.

How it works:

Using a pressure transducer, the head pressure of the water system is measured and converted to the water level to be displayed.





Tanks Joined

Option 1013C

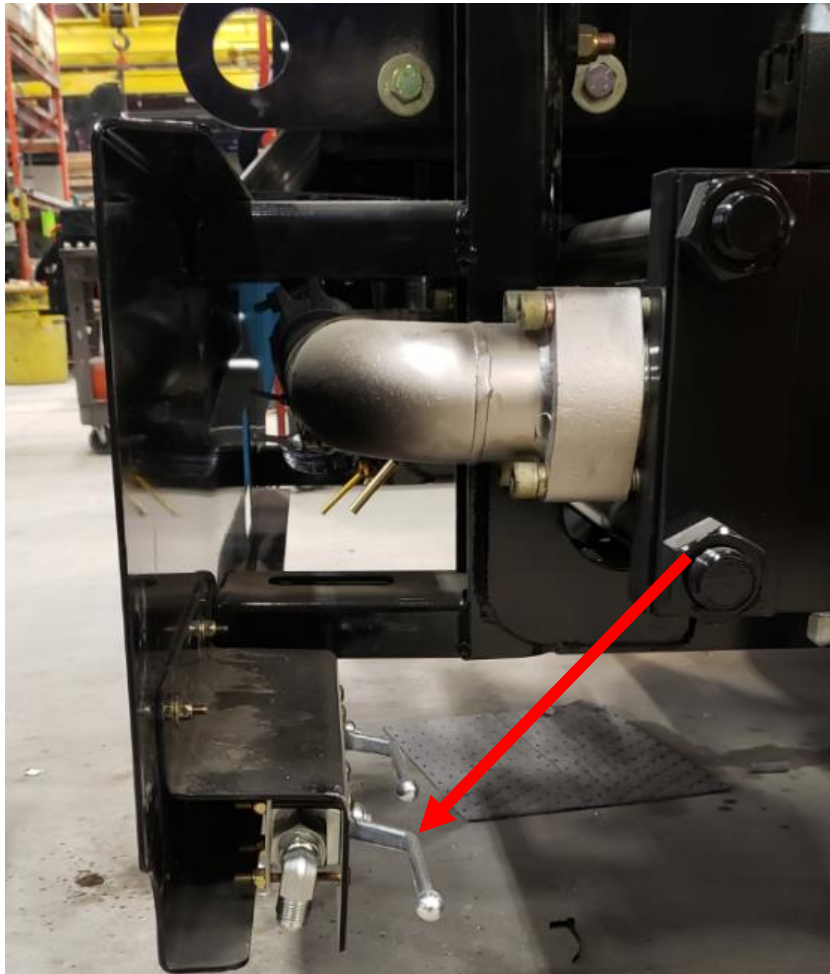
What it does:

Allows the debris body to be filled with water and connected to the water tanks to increase the available freshwater capacity.

How it works:

An air gap is added to the debris body so that the debris body can be filled with fresh hydrant water while still eliminating concern for contamination of a hydrant. The debris body is connected to the upper left Watertank to allow the water in the body to be available to the Jet Rodder pump.





Rodder Pump Drain Valves

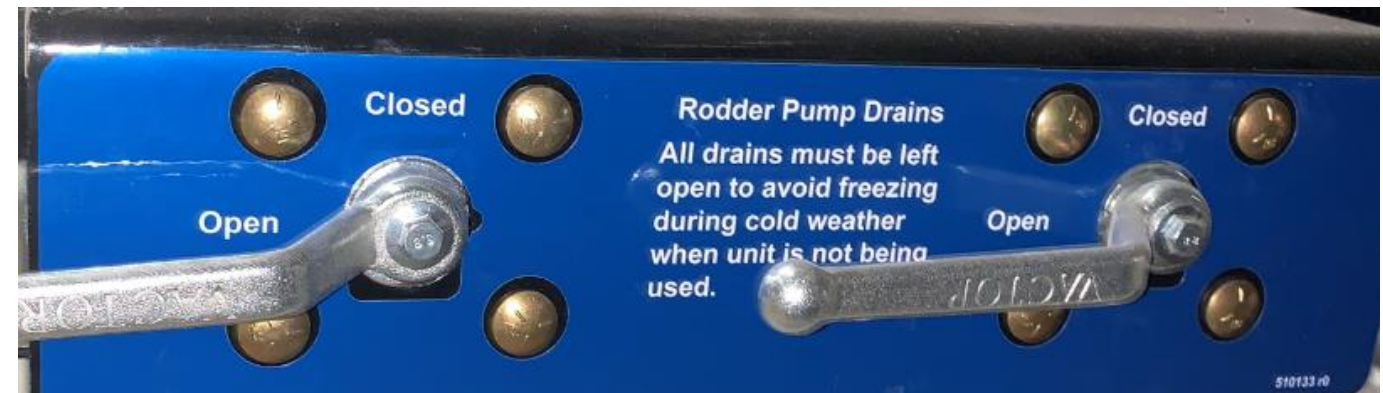
Option 6019C

What it does:

Provides an easy tool free solution for draining the rodder pump

How it works:

Ball valves are installed on the rodder pump and plumbed to the drain points. This allows for simple and fast draining or purging of the rodder pump.





Continuous Watertank Fill

Option 2004C

What it does:

Automatically shut off the flow from the hydrant based on the Watertank level.

How it works:

A ball valve is installed in the P/S Watertank fill line to shut off the hydrant flow based on the water level in the watertanks.



Rodder Hose Pinch Roller

Option 6004CC

What it does:

Applies force and the rodder hose to prevent bird nesting.

How it works:

A roller the width of the drum applies pressure towards the center of the drum via air cylinders to reduce hose hop on the reel. This aids in hose reel wrapping.

Body Options

- [Cyclones](#) - [Page 21](#)
- [Rear Door Splash Shield](#) - [Page 22](#)
- [Debris Level Indicator](#) - [Page 23](#)



Cyclones

Option 1014C

What it does:

Cyclonic separators to improve the filtration of the system to protect the vacuum components

How it works:

The material enters the cyclone tangent to the cyclone body and centrifugal force flings the material to the outside while the material falls down the air stream travels upward and out of the cyclone.



Rear Door Splash Shield

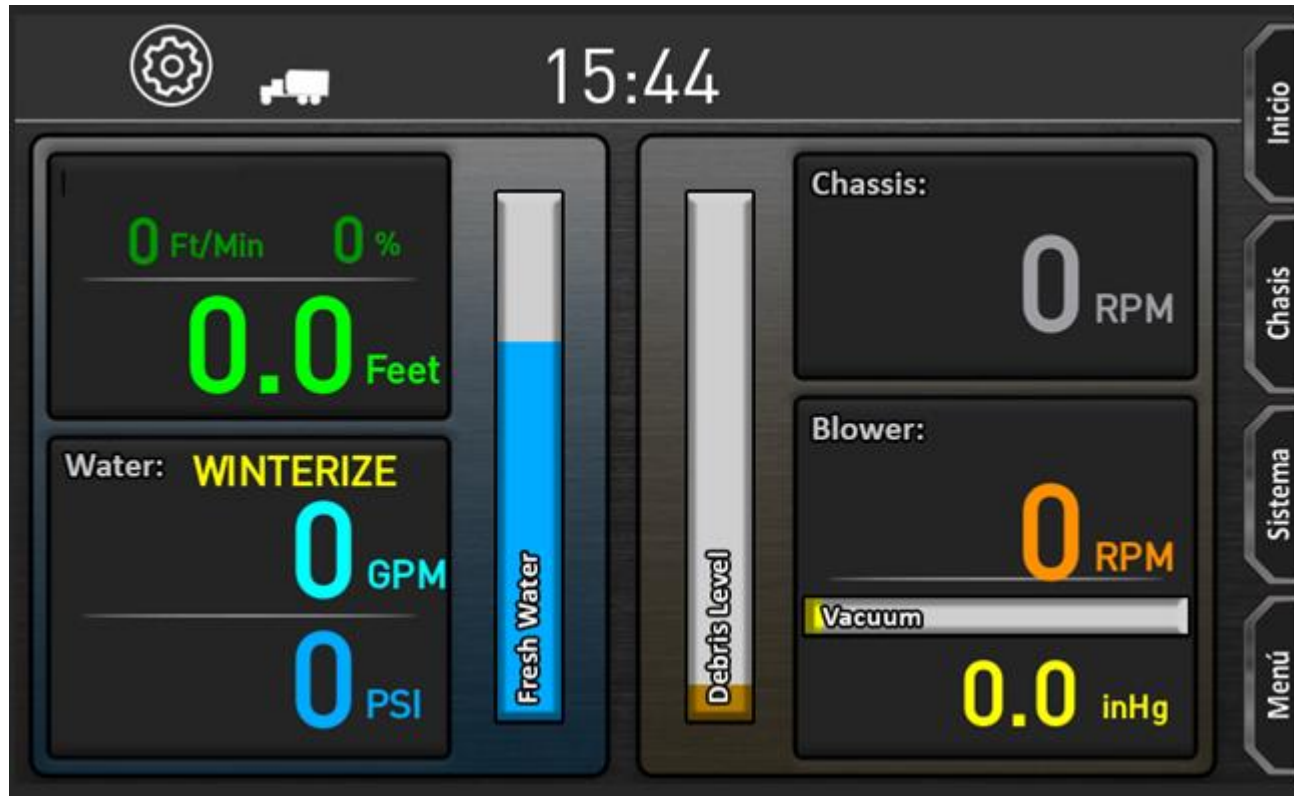
Option 1022C

What it does:

The rear door splash shield directs the material being dumped from the debris body

How it works:

This is done with steel plates that protrude rearward from the body to redirect the material rearward when the door is initially opened. This also helps control the flow of material into a container if required.



Debris Level Indicator

Option 3021C

What it does:

Displays the level of material inside the debris body on the front display screen.

How it works:

It utilizes a rotary sensor connected to the debris body pointer arm to ensure accuracy between both the mechanical display arm and the digital representation on the front display screen. The Debris Level Indicator is also tied into the Vacuum Relief system so if the debris level gets too high, it will activate the vacuum relief.



Rear Door Options

- 6:00 Rear Door Valve

- Page 30



6:00 Rear Door Options

Options 1008C / 1008CA

What it does:

Allows the operator the valve operation of their choice while decanting through the rear door.

How it works:

A 6" port extends through the rear door to decant from the bottom center of the rear door. The inlet of the pipe is covered by a screen to keep large debris from being decanted out of the body.

1008C - Butterfly Valve

1008CA - Manual Knife Valve w/ Camlock

Boom Options

- 5' Telescoping Boom - Page 40



5' Telescoping Boom

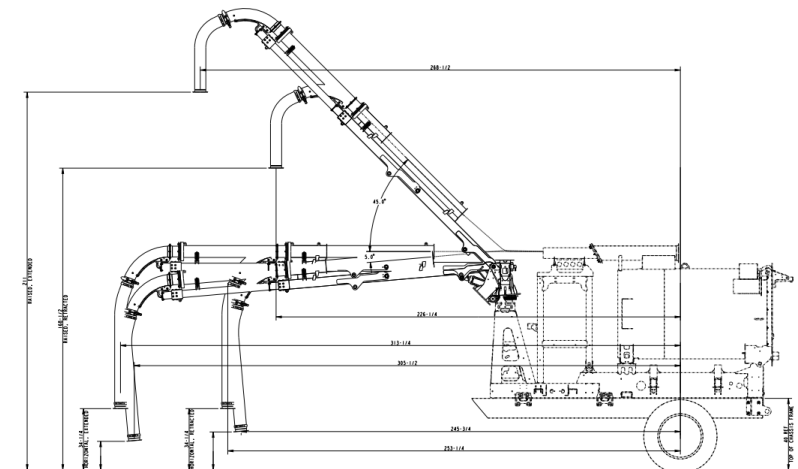
Option 4015C

What it does:

5' telescoping allows the boom to be operated up to 18' away from the centerline of the truck.

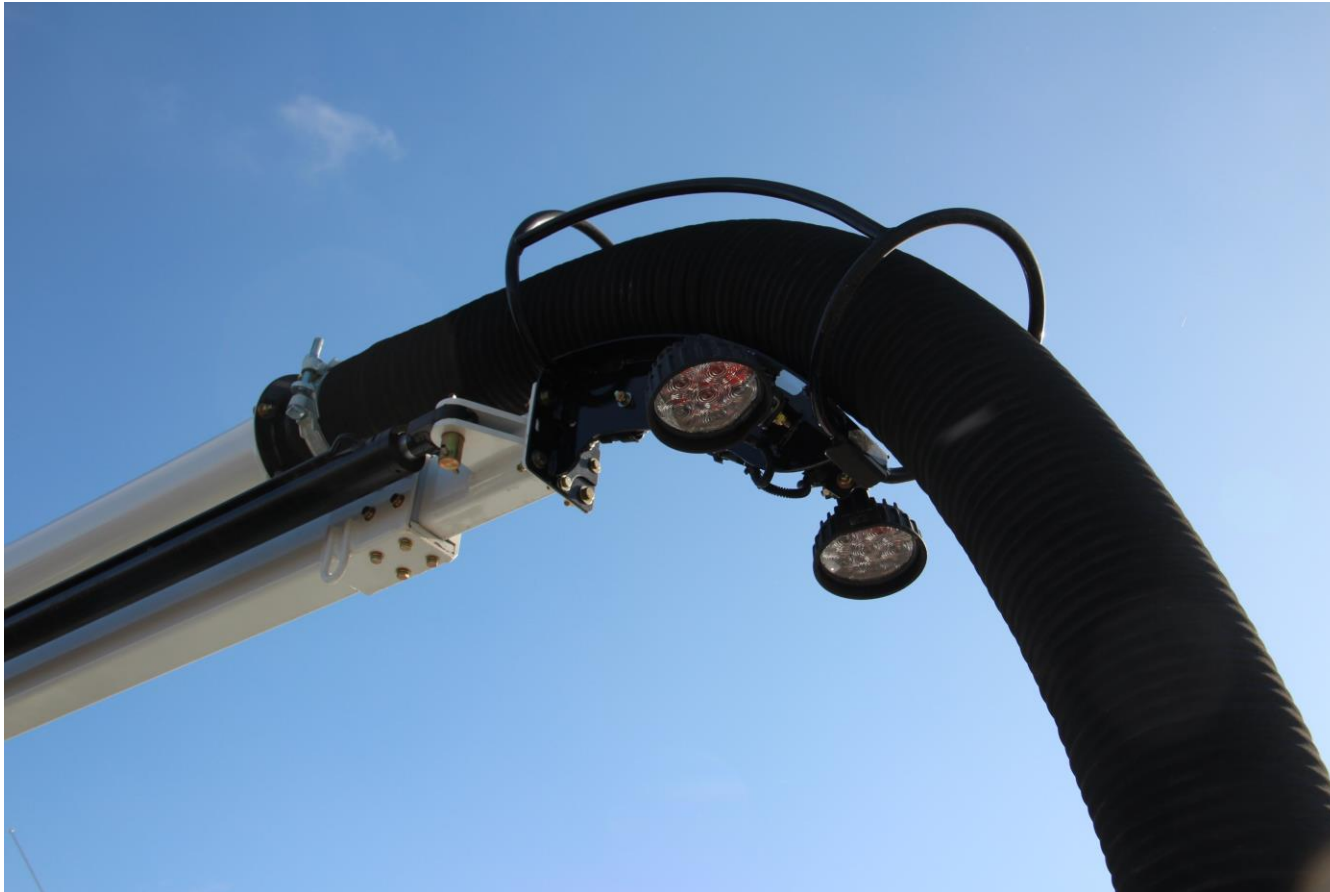
How it works:

The lower structure of the boom is extended out which telescopes the boom tubes with it. Tubes can be added to increase the working depth.



Lighting Options

- Boom Worklights	-	Page 50	Rear Door Split Arrowboard	-	Page 59
- Rear Worklights	-	Page 51	Beacon Light w/ Limb Guard	-	Page 60
- Side Worklights	-	Page 52			
- Manhole Worklights	-	Page 53			
- Flashing Light Packages	-	Page 54			
- Rear Door Arrowstick	-	Page 55			
- Rear Door Arrowboard	-	Page 56			
- LED Beacon	-	Page 57			
- H.A.L.O. (Handsfree Accessory Light Option)	-	Page 58			



Boom Worklights

Option 8029CA

What it does:

Installs worklights on the boom to illuminate the work area beneath the boom.

How it works:

Worklights are installed at the end of the boom. Wiring through the moving portion of the boom and circuit protection are provided.



Rear Worklights

Option 8029CB

What it does:

Installs worklights on the rear door to illuminate the work area around the rear of the unit. These will also come on when the unit is put into reverse as additional backup lights.

How it works:

Worklights are installed on the rear door. Wiring through the module and circuit protection are provided.

Side Worklights

Option 8029CC

What it does:

Installs worklights on both sides of the unit to illuminate the work area.

How it works:

Worklights are installed on the crossbar on both sides of the unit. Wiring through the module and circuit protection are provided.





Manhole Worklight

Option 8029CD

What it does:

Installs worklights on the hose reel to illuminate the manhole.

How it works:

Worklights are installed on the hose reel. Wiring through the module and circuit protection are provided.





6 Light Package



10 Light Package – In Addition to 6 Light

Flashing Light Package

Option 8020C / 8020CA

What it does:

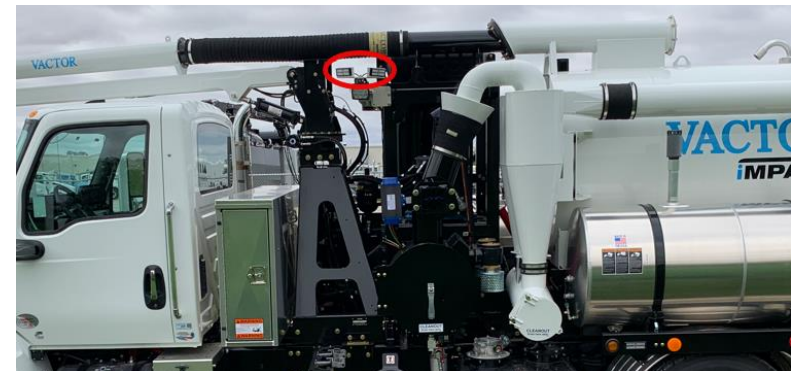
Provides different levels of notification to surrounding traffic and pedestrians.

How it works:

Different lighting packages provide numerous combinations of lights for warning from one side to four.

8020C - 6 Light System – Lower Rear, Side, and Debris Body

8020CA - 10 Light System – 4 Additional on Side



Rear Door Arrowstick

Option 8001CM



What it does:

Provides rear directional warning to approaching traffic.

How it works:

Arrowstick illuminates in the requested direction to direct the approaching traffic around the vehicle.



Rear Door Arrowboard

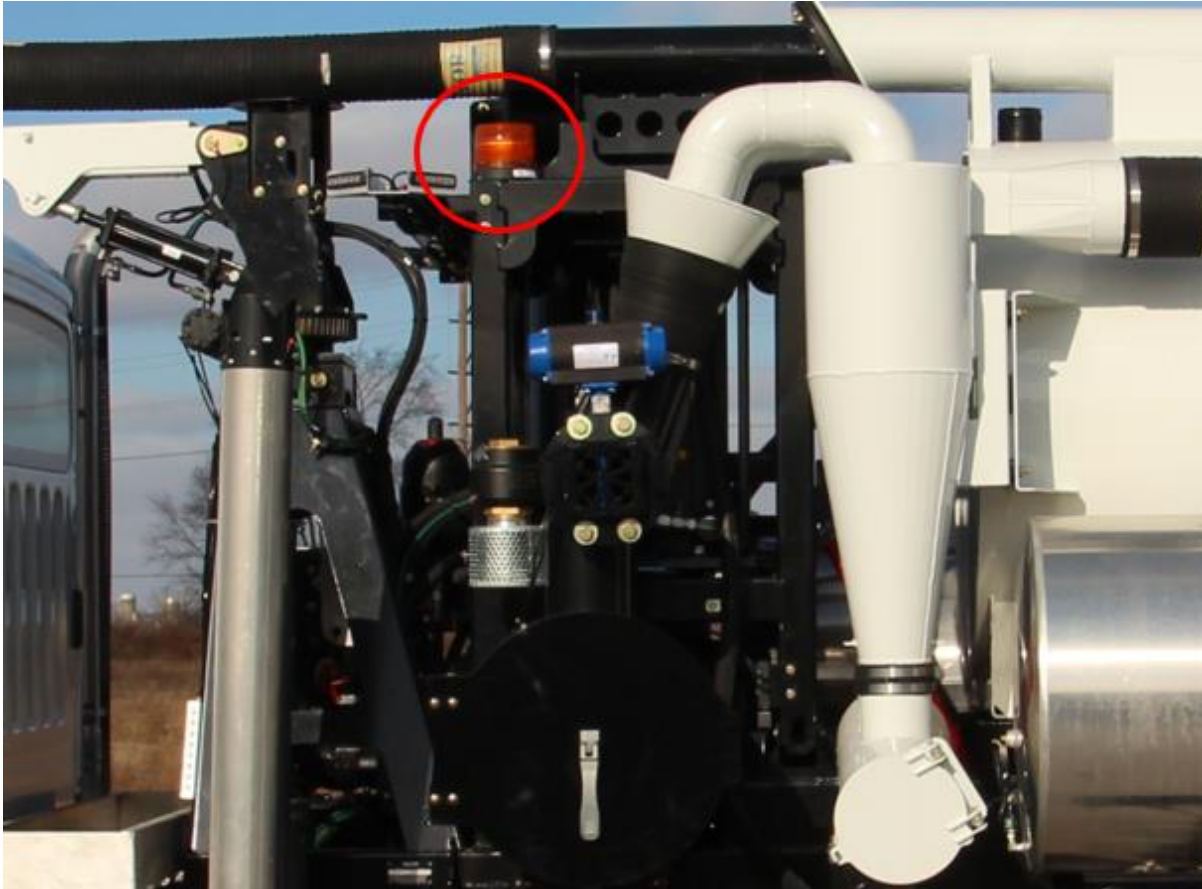
Option 8001CJ

What it does:

Provides rear directional warning to approaching traffic.

How it works:

Board illuminates in the requested direction to alert the approaching traffic.



LED Beacon Light

Option 8004CD / 8004CE

What it does:

Alerts oncoming traffic.

How it works:

LED light mounted high and near the centerline of the unit.

8004CD – Rear mounted LED beacon light

8004CE – Front mounted LED beacon light



H.A.L.O (Hands Free Accessory Light Option)

Option 8005C / 8005CA

What it does:

Allows the operator to view the bottom of a manhole while remaining handsfree.

How it works:

An explosion/water proof light can be lowered into the manhole using a retractable reel. This option also comes with point of use storage for the light.

8005C - H.A.L.O. (Handsfree Accessory Light Option)

8005CA - H.A.L.O. (Handsfree Accessory Light Option) w/o light (system only)

Rear Door Split Arrowboard

Option 8001CL

What it does:

Provides rear directional warning to approaching traffic.

How it works:

Board illuminates in the requested direction to alert the approaching traffic.

Picture Coming Soon!

Beacon Light Limb Guard

Option 8004CF / 8004CG



What it does:

Protects the beacon light.

How it works:

A metal cage mounted over the beacon light to protect it from damage.

8004CF – Rear mounted beacon light with limb guard.

8004CG – Front mounted beacon light with limb guard.

Miscellaneous Options

- Back of Cab Toolbox - Page 70
- Safety Cone Racks - Page 71
- Camera Systems - Page 72
- Handheld Spotlight - Page 73
- Handlight - Page 74
- Wireless Option - Page 75
- Final Filter & Silencer Ball Valve Drains - Page 76



Back of Cab Toolbox

Options 9071C / 9071CA / 9071CAL

What it does:

Adds additional tool storage to the unit.

How it works:

Adds either a tool tray or toolbox to the area behind the cab.

9071C – BOC Tool Tray

9071CA – BOC Toolbox 14w x 36h x 88d

9071CAL – BOC Toolbox 14w x 36h x 88d (with lighting)



Safety Cone Racks

Options 9023C / 9023CA

What it does:

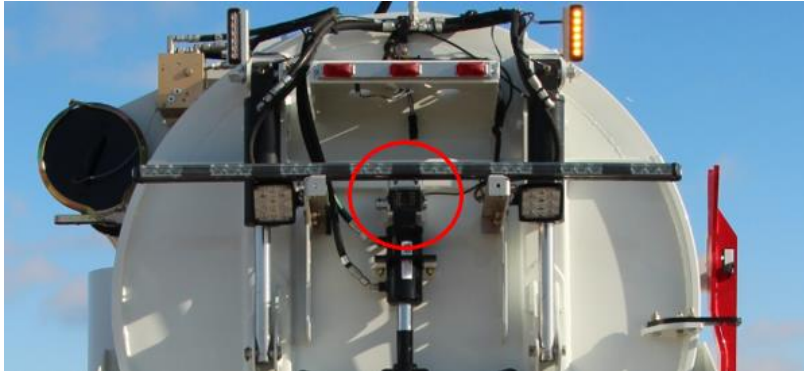
Includes drop in style safety cone rack.

How it works:

Cone racks are installed in the best location based on the content of the unit.

9023C - Drop In Style Cone Rack

9023CA - Additional Drop In Style Cone Rack



Camera Systems

Options 9021C / 9021CA

What it does:

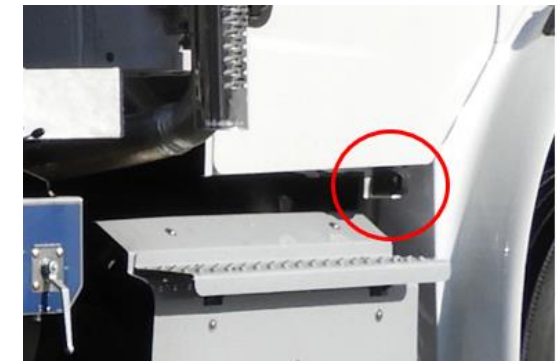
Allows for better visibility around the truck when approaching a manhole or changing lanes.

How it works:

Depending upon the package selected, the unit can be equipped with a front camera mount on the front of the hose reel and side turn cameras mounted to the chassis steps.

9021C - Front and Rear Cameras

9021CA - Front, Rear, and Side Cameras





Handheld Spotlight

Option 8002CA

What it does:

Allows the operator to light the bottom of the manhole.

How it works:

Battery powered worklight that allows the operator to work cord free.

Handlight

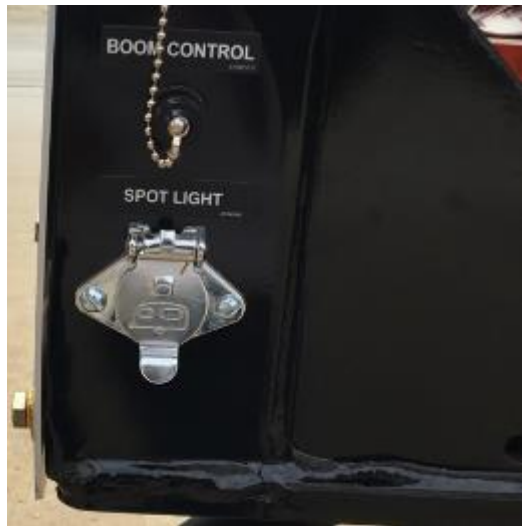
Option 8002C

What it does:

Allows the operator to light the bottom of the manhole.

How it works:

12V powered light that is connected to the hose reel for power.



Wireless Options

Option 4011C / 4011CA



What it does:

Allows the operator to work remotely from the control panel safely and efficiently while still having truck information at the ready.

How it works:

Our wireless uses 2-way communication. This allows the operator to control the unit while receiving information from the truck on what it is doing.

The handheld remote is smaller and lets unit functions. It is intended primarily to aid in hydro excavation applications. This remote controls boom, throttle and pump on/off.

The bellypack remote has hose reel, boom, throttle, and pump / flow control. It is intended primarily for sewer / catch basin cleaning applications.

4011C - Wireless Handheld

4011CA - Wireless Bellypack



Final Filter & Silencer Drains

Option 6019CA

What it does:

Adds a 3/4" ball valve to the silencer and adds two 1/2" ball valves to the clean and dirty side of the final filter.

How it works:

Ball valves in these locations allows for quick and easy draining of the final filter and the silencer. These ball valves will replace the existing plugs.